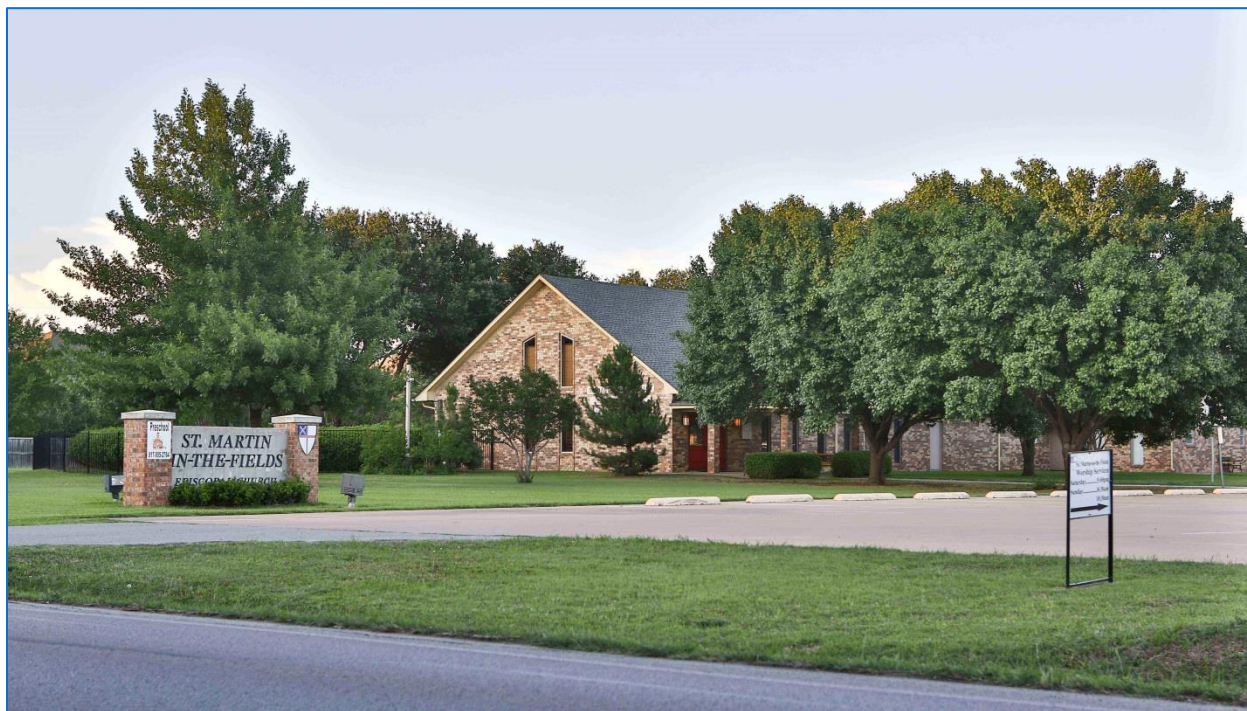


Parish Profile

St. Martin-in-the-Fields Episcopal Church

Keller, Texas



St. Martin-in-the-Fields Episcopal Church is a vibrant congregation started in 1970 when six families united to form the church on 11+ acres they purchased in a semi-rural area of Tarrant County. The church has grown from a mission, worshiping in a small trailer in a cow pasture, to a parish with a three-building campus, housing an average weekend attendance of 199. Our church has provided welcome and acceptance in changing social times since it was formed.

We look forward with anticipation and prayer to the next chapter of our parish story, as we seek to discover where God will lead us as we call a new rector, continually growing in the love of God and in the service of our neighbors. Our call for a new rector is a sincere invitation to join us on our spiritual journey.



St. Martin-in-the-Fields Episcopal Church
223 South Pearson Lane
Keller, TX 76248
817-431-2396
www.stmartininthefields.org



Vision, Mission and Values of St. Martin-in-the-Fields Episcopal Church

Vision Statement

St. Martin-in-the-Fields is an open and accepting community
where the love of Jesus lives and transforms
through worship, education, fellowship and service
in our church and in the world.

Mission Statement

Our mission is to be Jesus Christ's heart, hands and feet
to our neighbors
no matter where they are on their journey of faith.

Core Values

To accomplish our mission,
St. Martin-in-the-Fields bases its decisions and actions on the following core values:

Service

We see the purpose of our service as sharing the abundance of our resources, talents and love with each other in our community, country and around the world.

Education

We provide Christian education for all ages throughout the week and on Sundays allowing us to deepen our understanding of God's word and actions in history and in our lives. Our day school provides an exemplary and nurturing Christian learning environment.

Acceptance

With God's grace we welcome with respect, empathy and awareness all whom God has created. We extend hospitality and compassionate understanding to all people and their ideas.

Faithfulness

We are committed to trusting in God, inspired by the Spirit, persevering in hope, enriched by the Sacraments and worship style of the Episcopal church.

Forgiveness

We belong to an evolving and diverse community that expresses forgiveness through the generosity of the Holy Spirit, carrying out Christ's work of reconciliation.

Who we are

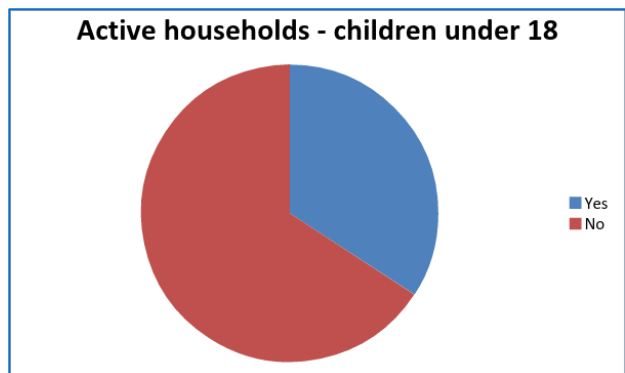


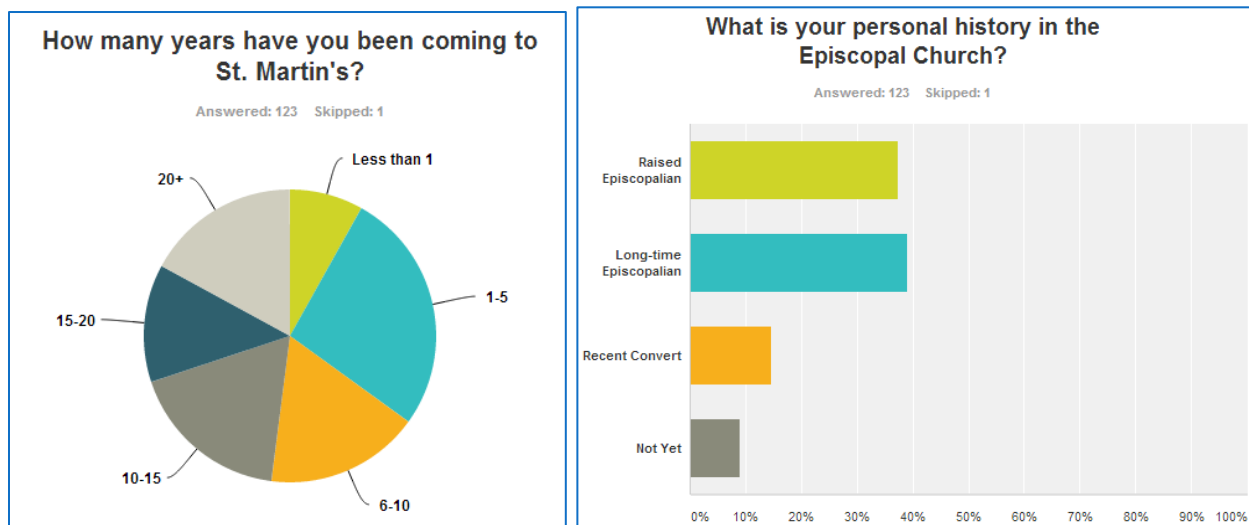
Come to St. Martin-in-the-Fields Episcopal Church on any given day and what may you find? A welcoming small staff, volunteer parishioners tending to the church's many ministries and outreach programs, children gathered or scampering to classrooms, community groups using our facilities, sports teams using our fields, a quaint worship space, or people at worship finding joy in the traditions of The Episcopal Church.

But perhaps more important than what you will find going on at St. Martin's is what you will feel: warmth, acceptance, openness. We are children of God, striving, as it states in our mission statement, to be "Jesus Christ's heart, hands, and feet to the world," at work with a compassionate, open, humorous, hard-working, generous spirit that makes St. Martin-in-the-Fields a stand-out voice for acceptance and love in our corner of the Fort Worth Metroplex. In that busy-ness, we eagerly and hopefully seek a new rector.

Who are we?

St. Martin-in-the-Fields averages 199 attendants throughout each weekend during our three worship services. We have a wide range of ages represented in our parish. Our congregation is primarily married couples and roughly a third of our households have children under the age of 18. We have an average of 40 children in attendance each Sunday; over the past year the numbers of children have fluctuated significantly with experimentation in Sunday School times and with the retirement of our previous rector. The majority of our parishioners live within 15-30 minutes from the church, with traffic in northern Tarrant County being a significant factor on drive times. We serve a wide variety of communities that have dramatically increased in population over the past 30 years of our church's existence. We have a great mix of people with various church histories.





We became a parish in 1987. We have called two rectors into our community and have been blessed to have numerous assisting clergy. Our interim rector has brought in a fresh point of view, focused on listening to the needs of the congregation, urging us to draft new mission and vision statements via town hall meetings, and urging us to strengthen and grow our ministries in tangible ways. Our associate rector departed in June 2014, feeling called by God to something new. She served five years at St. Martin's while in seminary, as a deacon, and a priest. The new rector of St. Martin's will be serving with much lay support, but as a single clergy for the current time.

Our survey results indicate the need for focused change in the areas of adult education and outreach to our local community. As with the church across America, our church struggles to meet the needs of young adults, which was borne out in our survey results, as our adults feel under-served in the education arena. Our survey indicated that our parish supports being open to LGBT members and the blessing of unions of LGBT couples. We hope that our new rector can inspire leaders, direct us with vision and prayer, and set us on a path to continued growth.

As tempting as it is to talk about our colorful history, we'd rather you [read it online](http://www.stmartininthefields.org/our-history/) at <http://www.stmartininthefields.org/our-history/>. We're a lot more interested in telling the story of who we are and our discovery of where we're going.

Whose are we?

As we reflected on “Whose are we?” in visioning discussions in the winter of 2013-2014, everyone’s first answer was “We belong to Jesus” and “We’re Jesus’ church.” We are people of God, striving, as it states in our mission statement, to be Jesus Christ’s heart, hands, and feet to the world. There are two other relevant things that define the identity of St. Martin-in-the-Fields that emerged from those visioning discussions: we’re a part of The Episcopal Church (TEC) and not the Anglican Church in North America (ACNA), and we’re a part of the continuing [Episcopal Diocese of Fort Worth](#). “Episcopal” in the geographic area of our diocese is confusing, with parties that left TEC claiming to be Episcopal churches and inhabiting Episcopal Church properties. “Episcopal” is a large part of our identity.

Briefly, we are one of the eight [congregations in the Episcopal Diocese of Fort Worth](#) that is still worshipping in church property that we’ve not been forced to leave, and that is not under [a legal property dispute](#). As the former diocesan bishop’s (Jack Iker) anti-gay and anti-women’s-ordination stance ramped up between 2003 and 2008 - and reached a head when the 2008 diocesan convention majority voted to abandon TEC and become part of the Anglican Province of the Southern Cone - our convention delegates voted to remain Episcopal. When congregations in the diocese were required to vote on whether to stay with TEC or leave with Iker, the overwhelming majority of our parish voted to stay. Episcopal is who we are, and we’ve stood true to that for a long time. Throughout the turmoil of this split within our diocese, we have focused on our local worship, on our local service, and on providing a heartfelt welcome to all in our community. We have not been overwhelmed by the angst and grief that surround church lawsuits and we have not been divided by TEC theological differences.

Being a property-rich congregation in our diocese has shaped us since 2008. We have physical assets that other churches in our diocese do not, and we share all that we can. We open our doors to displaced congregations for meetings and worship when their usual rented spaces are unavailable, and to the diocese to host many different types of gatherings. Being blessed to have a traditional roof and deep leadership roots has helped us strengthen the diocese as well. St. Martin’s people serve in many ways in diocesan committees, commissions, and ministries, offering their gifts and talents to strengthen our Episcopal community work.

The Episcopal Diocese of Fort Worth is focusing in fresh ways on congregational health and leadership development with workshops and activities for clergy and lay leaders. [Provisional Bishop Rayford B. High, Jr.](#) is a gifted pastor who goes where he’s needed, when he’s needed, to confirm, ordain, plan, support, and have fun. Our 2014 diocesan convention, planned by the [Fort Worth East Deanery](#), of which St. Martin’s is a part, will be November 14-15 at [Globe Life Park in Arlington](#) and will offer workshops and themed round-table discussions to develop leadership and build a strong diocesan community.



Worship

Weekend services form the core of our worship at St. Martin-in-the-Fields, with three services – Rite II at 5pm Saturday, Rite I at 8:30am Sunday, and Rite II at 10:30am Sunday.

St. Martin's tends to prefer a traditional, formal liturgical style for the majority of services. Our Saturday night and early Sunday services are lower-key but we have music at all services. Saturday services during Lent and Easter offered a Taizé form, which was new to us. The meditative, contemplative, unhurried worship was well-received. We use incense on high holy days.

Our music ministry has experimented with different instruments and style, but we have not implemented a "contemporary" service. Based on parish profile survey results, contemporary worship does not appear to be a direction in which our parish wants to grow.

Lay leadership plays an active and important part in our worship at every service. Our acolytes are our most visible worship participants, and our choir, lectors and worship leaders are the most vocal. Quieter leaders are greeters, ushers, and friendly Radical Hospitality bread deliverers who deliver fresh bread and information to new visitors. Behind the scenes are the altar guild, flower guild, and bread bakers. All do their part to present the details that keep St. Martin's special, and to provide elbow grease to make the details seem effortless.

Families and kids of all ages have enjoyed taking a break from strict liturgical style when we have special-themed worship and diverse liturgies at some Saturday night worship services.

At the peace we're handshakers, nodders, roam-about huggers, and across-the-church peace-sign wavers. Not many scoot out the door after communion; most stay for the closing hymn and a "howdy" and handshake with the preacher. We have a hearty group each Sunday in our "Coffee Hour" following the 10:30am service, where we often spotlight ministries, celebrate congregants for accomplishments and enjoy donuts and coffee.



Education

Christian Education is a vital part of our parish and remains a factor that draws people to participate in our church.

Education for children aged 4 years through 12th grade

Sunday School is offered during the school year during the 10:30am service. Children gather in the education building and participate in four age-level classroom groups. Children join their parents in the sanctuary at the Eucharist. During the summer, we offer Children's chapel during the 10:30am service, where children and teens can enjoy an interactive chapel with Bible stories, questions and art.

Vacation Bible School, our church's largest education and evangelism program, is one high-energy week of summer, welcoming kids from our church, academy and community. Our parish supports our preparation for VBS with planning, supplies and decorating; a large number of teens and adults serve week-long as crew leaders, staff and support.

Episcopal Youth Community (EYC)

Our **EYC** serves teens in grades 6-12 with weekly meetings and service opportunities. They meet Wednesday nights at 7pm for fellowship and to serve others. Our youth are thoughtfully engaged in the life of our parish. We cherish our young people and place a high value on supporting them. We believe they are vital to our parish life and our outreach programs. Parishioners eagerly support their missional fundraising and outreach efforts, mission trips and other activities. This year two St.



Martin's teenagers are headed to Philadelphia for the Episcopal Youth Event (the only two from the diocese) and the congregation generously supported funding their travel.

Sunday School Experimentation and challenges

Between October 2013 and February 2014, our congregation experimented with Sunday School for all ages at 9:30am, but this caused a significant decrease in overall Sunday School attendance, and we returned to our former and current schedule in March 2014. As a result, we currently offer no Sunday adult education. It is important to note that changes to children's Sunday education didn't sit well with busy families.

Adult Education

We offer two ongoing weekday adult education programs - [Sisters of the Spirit](#), a women's book study, and [Wednesday Study](#) which has studied scripture, church history, and books. In the last year, we've had short-term adult offerings, including [Friday Nights in Lent](#), a Saturday night inquirers' class (called [Episcopal 101](#)), a [Wednesday Night Bible Study](#) with a stewardship focus, and a [Friday Night Study](#) in the summer. We need help and focus offering regular adult education, as our parish survey results indicated our congregants are hungry for small-group education offerings.



St. Martin-in-the-Fields Preschool and Academy

[St. Martin-in-the-Fields Preschool and Academy \(stmartinacademy.com\)](#) is a longtime and important program to our congregation and local community. Initial spring 2014 enrollment was over 60 students. The academy has offered a Monday through Thursday, 9am to 2:30pm, program for over a decade, and

plans to expand to five days a week in fall 2014. Our preschool is in a time of transition, with new leadership and educational opportunities emerging. The academy and the governing school board are considering other ways to better support the growing demographic of families in which both parents work full-time and to address a slide in enrollment. The congregation made its support for the academy clear by including education in our [vision statement](#) and in our Education core value: “We provide Christian education for all ages throughout the week and on Sundays allowing us to deepen our understanding of God’s word and actions in history and in our lives. Our day school provides an exemplary and nurturing Christian learning environment.”

Room for growth

Our survey results indicate the need for focused change in the areas of adult education and outreach to our local community. As with the church across America, our church struggles to meet the needs of young adults, which was borne out with our survey results, as our adults feel under-served in the education arena. We hope that our new rector can inspire leaders, direct us with vision and prayer, and set us on a path to continued growth.

Service

Our church is blessed to have active ministries in which people can serve, and active groups that serve our community. Please click on a title in the list to read more about any group or ministry or go directly to our website to read more in detail at www.stmartininthefields.org/serve.

- [Acolyte Guild](#) - St. Martin’s Acolyte Guild is composed of youth and adults who enhance the worship services by leading the processions, assisting in preparation of the altar for Holy Eucharist, and assisting with incense at special services.
- [Al-Anon Family Group of Keller](#) - The Al-Anon Family Groups are a fellowship of relatives and friends of alcoholics who share their experience, strength, and hope in order to solve their common problems.
- [Altar Guild](#) - The Altar Guild prepares all things necessary for the celebration of the Eucharist or any of the other sacraments of the church, including baptisms, weddings and funerals. Working under the direction of the clergy, members prepare the altar for the Eucharist and take care of the vessels, vestments, linens, and acolyte equipment.
- [Blood Drive](#) - St. Martin’s holds quarterly blood drives with Carter BloodCare, and the bloodmobile comes to us to make life-saving donations easy to do. The majority of blood needed to save lives in north, central, and east Texas comes from donors at regular blood drives like ours.



- **Bread Ministry** - The bread ministry group strives to let newcomers know that we are very glad they chose to be with us, and that we hope they will become a part of our church community.
- **Choir** - The choir at St. Martin's is a budgeted ministry of the church, with a director and about a dozen voices, accompanied by the organ, piano and special event instruments. Music is a part of all St. Martin's services.
- **Communications Development** - The Communications Development committee works to extend our church's evangelism into the digital and online world. Our impetus for extending communications beyond the doors of our church comes from Acts 5:20, where the angel who freed the apostles from jail told them, "Go, stand in the temple courts, and tell the people all about this life."
- **Community Outreach** - Community outreach provides opportunities to reach out locally and around the globe to those who are in need. Everyone is encouraged to give of themselves by following the example of Christ in the world as well as the example of Saint Martin (our namesake and patron saint). We bring non-perishable food each week to support the Community Storehouse and other organizations.
- **Education for Ministry (EfM)** - EfM is a program through the Seminary of the South to equip lay people with ministry education and skills to do God's work.
- **Festival in the Fields** - The Festival in the Fields is an annual event, held in the fall at St. Martin-in-the-Fields. The 2014 festival will be held October 25, 2014. This year we will be partnering with Fever United, a local youth soccer club, to combine the festival with sports activities.
- **Flower Guild** - The Flower guild decorates the altar area with beautiful flower arrangements and arranges for special displays at Christmas and Easter services.
- **Garden Guild / Scrip Program** - St. Martin's Garden Guild was created many years ago to provide for trees, shrubs, and other plants to beautify the church property. All work in connection with the Garden Guild/Scrip Program is done by volunteers. This ministry is funded through the Scrip Program, where gift cards are the scrip.
- **Green Team** - The Green Team is a group of men and women who maintain the majority of the church landscape. Each weekend a team meets to mow and edge and make sure the church grounds welcome everyone.
- **Hospitality Committee** - The Hospitality Committee is in charge of Hospitality Hour each Sunday after the 10:30am service. Other ministries and church members host coffee and donuts each week in the parish hall.
- **Labyrinth Ministry** - St. Martin-in-the-Fields is studying ways to have and build a labyrinth. This year Friday Nights in Lent offered many their first experience in a labyrinth. We hope someday to have a permanent Labyrinth on the grounds that will allow this wonderful ministry to be shared with the greater community.
- **Ladies Night Out** - Ladies Night Out is a ministry to promote the spirit of fellowship with all women of the church and to help newcomers feel welcome and meet other women of the

church. We enjoy a meal out on the second Tuesday of each month, enjoying a variety of cuisines and locations.

- [Lay Liturgical Ministry Guild](#) - The Lay Liturgical Ministry Guild (LLMG) consists of Lectors, Chalice Bearers, Lay Eucharistic Visitors (LEVs) and Worship Leaders. Members of this guild fulfill their lay ministry by being an integral part of our worship liturgy – assisting the clergy with the readings and in the celebration and distribution of the Eucharist.
- [Narcotics Anonymous \(Hope Group of Narcotics Anonymous\)](#) - Narcotics Anonymous (NA) is a fellowship of men and women who meet regularly to help each other stay clean. Members share their successes and challenges in overcoming active addiction and in living drug-free, productive lives through the application of the principles contained within the Twelve Steps and Twelve Traditions of NA.
- [Prayer Ministry](#) - In time of trouble, we call upon the Lord; in time of thanksgiving, we give praise to God.
- [Prayer Shawl Ministry](#) - The Prayer Shawl Ministry at St. Martin-in-the-Fields invites you to join us in creating prayer shawls. The prayer shawl is a tangible sign of the gift of God's love and our prayers for people in need.
- [Quiet Committee](#) - As soon as a call goes out to a team leader, the Quiet Committee springs into action. This ministry serves St. Martin-in-the-Fields families who are in need a delicious meal prepared especially for them by the talented team members.
- [Radical Hospitality](#) - The mission of Radical Hospitality at St. Martin's is to foster a welcoming, inclusive, accepting and nurturing environment. We have a team of greeters who strive to make our visitors welcome as they enter our doors, and to encourage all to wear their nametags to encourage communication.
- [Recycle Program](#) – Recycle, it's the right thing to do. Our children and adults are being heard: they have asked that we stop using Styrofoam in an effort to show our support in going green.
- [Sisters of the Spirit](#) - Sisters of the Spirit is a group for women who are interested in exploring their faith through book discussion and the shared experience of friendship.
- [Spiritual Awareness](#) - The Spiritual Awareness Group meets weekly on Thursdays in the Chapel from 10–11am. The purpose of the meeting is to allow sharing of our "faith story" and how we see God working in our lives, most especially in the week that has passed.
- [Usher Guild](#) - St. Martin's Usher Guild's mission is to greet worshippers at each service, provide them with a worship leaflet, collect the offering, and guide communicants to the altar rail. Ushers also assist during the service with seating, and bring the communion elements to the altar rail, take a head count, and assist in other ways as needed.
- [Wednesday Study](#) - The Wednesday study group is an adult class that meets to grapple with scripture or books on faith in a seminar-type study with discussion and sharing.

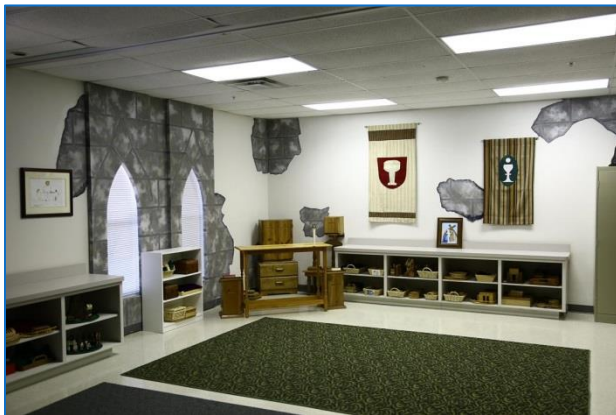


Physical Plant: Building & Grounds

St. Martin-in-the-Fields owns 11+ acres of land that connect to Southlake's 12-acre Chesapeake Park. This neighborhood park's trails and well-maintained greenspace have added a vibrant connection between our church and the nearby neighborhoods.



We have a quaint sanctuary, attached office building and chapel, and an education building with two open parish halls and 10 classrooms for our academy, Sunday School and youth. Our playground with equipment for kids ages 2-5 is essential for our academy and is adjacent to the education building.



Our Memorial Garden and Columbarium adjacent to the sanctuary is a shady and restful space. Outside the Memorial Garden is the St. Francis Garden, a space set aside for the cremated remains of pets. Our garden and fields are sometimes the setting for such services as Easter Morning sunrise and the Blessing of the Animals.



Our building and grounds are not only central to our worship, fellowship and education programs, they are key to our outreach. Our welcoming campus allows us to host community groups like scouts and 12-step programs every day of the week, and to occasional host community activities such as serving as a precinct polling location. We currently have a wonderful partnership with [Fever United Soccer Club](#) to use our south fields. Our outdoor stations of the cross are on the perimeter of our south fields.



Our grounds are maintained by our "Green Team," rotating groups of volunteers who mow and trim our grounds, and by Fever United, who irrigates our south fields and graciously mows and trims our outlying acreage. The Garden Guild/Scrip Program provides funds for trees, shrubs, and other plants to beautify the church property.



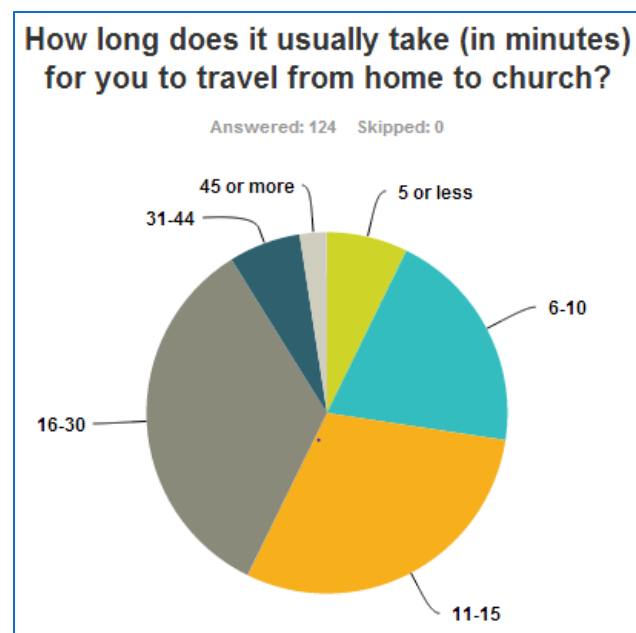


One near-term, funded indoor project is the installation of a painted labyrinth on the floor of our larger parish hall. Our acreage provides room for possible future growth, including options for an outdoor labyrinth and an additional playground, and larger, expansive options like a larger sanctuary and school. Where will God lead us?



Location

St. Martin's is located in a bustling corner of northeast Tarrant County, 19 miles northeast of downtown Fort Worth, on the border of [Keller](#) and [Southlake](#). Keller has a population of 42,000 (2012) and Southlake 28,000 (2012); both are affluent suburban communities. The densely populated area allows for congregants from numerous cities and towns in the metropolitan area. Local school systems have excellent reputations for top-notch public education. There are also several private school options in Keller and surrounding communities.



Our geography is meaningful to the makeup of our congregation - we're not a neighborhood church. Our families come from seven different school districts. Our members drive quite bit to come to church, from every direction, bringing with them suburban, urban, small town, farm, and ranch lifestyles to blend together into our community. We cover a wide variety of communities that have dramatically increased in population over the past 30 years of our church's existence.

Being a part of the large Dallas/Fort Worth Metroplex presents top-notch medical care and education. College choices abound with public and private education alternatives: Texas

Christian University and its Brite Divinity School, Dallas Theological Seminary, University of Dallas, Southern Methodist University, University of Texas at Arlington, University of Texas at Dallas, University of North Texas, Texas Women's University, Texas Wesleyan University and six Tarrant County College campuses. Cowboys and culture go hand-in-hand in a comfortable blend. Sports fans will enjoy our local sports teams - Texas Rangers, Fort Worth Cats, Dallas Mavericks, Dallas Stars, Dallas Cowboys, while more adventurous fans may seek out the Stockyards Rodeo in Fort Worth and motorsports at Texas Motor Speedway. Tarrant County, anchored by still-expanding Fort Worth, is known for exceptional performing and visual arts including the Fort Worth Symphony Orchestra, Bass Performance Hall, and six renowned museums.

Stewardship

Our practice of stewardship is expanding to embrace the value of spiritual giving, not merely to sustain ourselves, but to enrich and embolden our ministries. In the fall of 2013, we used The Episcopal Network for Stewardship (TENS)



materials (<http://www.tens.org/>) for the first time on our website and in print for weekend worship. We provided those materials and invited parishioners to read and reflect and pray on the TENS weekly series. Our preachers preached at least part of their sermons on stewardship throughout our pledge drive.

We are moving from a stewardship pledge and/or treasure-time-and-talent drive in the fall toward practices intended to promote giving as a year-round spiritual practice woven through our ministries. Our stewardship team is working to build and launch a new program based on “Holy Habits.” It will have regular blog posts and calls to action, talks from the lectern, periodic coffee hour events, and check-ins with ministry leaders.

Finances

Church operations, from a May 2014 financial point of view, are uncomfortable. As of March 2014, year-to-date the parish was short \$19,342 in Total Operating Income, including a shortfall of \$18,856 in Pledge Income. Prudently, the parish had underspent the expense budget by \$6,670, giving St. Martin-in-the-Fields a net negative income of (\$12,637) through March 2014. The normal Easter “miracle” did not improve the budget picture in April. The Finance Committee reviewed the budget with the Interim Rector in early May 2014 and asked him to help make the parish members aware of the shortfall.

St. Martin’s has experienced this type of shortfall in the past but never this early in the year. With the help of clergy and vestry members making appeals to the members we have been able to meet our budget income in years past. The Finance Committee put together a very aggressive budget in December 2013 (\$79,400 more than our 2013 budget) that was approved by the vestry and presented to the parish at the annual meeting in January 2014. The budget included several new pledges which allowed payroll expansion to cover the interim rector’s package and our associate rector’s package as well as fully funding several ministries which had been only partially funded or underwritten in the past. The Finance Committee members and the vestry do not want to balance the budget by cutting expenses and programs unless we are sure the pledge shortfall is not recoverable. We want to accomplish our mission by generating income pledged by the church members each year. Our new rector and church leaders cannot be shy about asking people to pledge and to meet their pledge throughout the year.

BUDGET 2014		EXPENSE 2014	
INCOME 2014		Total Building & Grounds	\$60,300.00
Pledge Income	\$390,000.00	Miscellaneous	500.00
Non-Pledge Income	56,000.00	Diocesan Assessment	57,497.06
Plate Receipts	8,500.00	Total Mission & Outreach	9,550.00
Other Contributions-Operating	5,400.00	Total Office Expenses	19,310.00
TOTAL CONTRIBUTIONS-OPERATING	\$459,900.00	Total Worship	3,600.00
		Total Programs	23,350.00
Academy Income	160,973.00	Total Academy	160,973.00
Other Income	5,400.00	Total Payroll & Benefits	289,192.94
TOTAL OPERATING INCOME	\$626,273.00	Total Operating Expenses	\$626,273.00

CASH BALANCES:	Opening 12/31/2013	March 31/2014
Checking	\$57,027.71	\$44,667.63
Savings	\$63,195.52	\$62,299.81
Capital Funds	\$394,285.37	\$394,285.37

Challenges & desires

St. Martin-in-the-Fields is challenged

- To reduce the gap between pledged income and actual income in 2014.
- To strengthen education for all ages, especially adults.
- To strengthen St. Martin-in-the-Fields Preschool and Academy.

St. Martin-in-the-Fields desires

- To increase our commitment to stewardship as spiritual giving.
- Like many other churches across the nation, to grow new church membership so that we do not lose our current membership numbers to normal attrition. We have been successful in doing this the last two years.
- To add additional members to our base membership so that we can afford to hire an associate priest to work with the rector. We will not thrive long as a one-priest parish.

Our vision for a new rector

Our Profile Survey weighed traits and characteristics which we most desired in a rector candidate. We would like an ethical, spiritual, friendly individual who is a good listener, an engaging speaker, and a strong leader. This individual should be a good preacher and educator, be energetic, child friendly, and flexible, and be a strong pastoral counselor, committed to outreach and lay leadership and (preferably) be a lifelong learner. Additionally, being a humorous visionary, open to multiple scripture interpretations and experienced as a rector with strong administration skills would be a plus.

Our rector needs to be committed to support the following ministries: Music, Christian Education (adult and youth), Outreach, and Pastoral Care. Our rector needs to be a dynamic pastor, speaker, and preacher, focused on serving families with children, familiar with growing and shaping Episcopal schools. Finally, we want our new rector to be competent in current technology and current communications.

In closing

To be considered for the rector position at St. Martin-in-the-Fields, please submit an Office of Transition Ministry response, and be in contact with

Mr. Richard Cables
Chair, Search Committee
St. Martin-in-the-Fields Episcopal Church
rcables@hotmail.com

and

The Rev. Canon Janet Waggoner
Canon to the Ordinary & Transition Ministry Officer
The Episcopal Diocese of Fort Worth
janet.waggoner@edfw.org
817-534-1900

To see how our rector search is progressing, read [Rector Search News](#) on our website stmartininthefields.org.

We hope and pray for a rector who will embrace our strengths and help us become stronger in our faith, our relationships with each other and with the greater community.

Prayer as we search for a new rector

Almighty God, you know the needs of your Church in every place: look graciously upon us, the people of St. Martin-in-the-Fields, and grant us the guidance of your Holy Spirit as we seek a new Rector for this parish.

Give us discernment, wisdom, and confidence in your timing.

Guide the members of our Search Committee, as they labor to be faithful in seeking your will.

We pray for the life of our parish, that we may continue to be strengthened in our mission to be Jesus Christ's heart, hands and feet to our neighbors no matter where they are on their journey of faith.

Bless us with mutual trust and respect, courage, and foresight as you shepherd our community through its journey.

Grace us with continuous direction and inspire us toward genuine self-reflection.

All this we ask as we walk in your ways to the glory of your name. Amen.